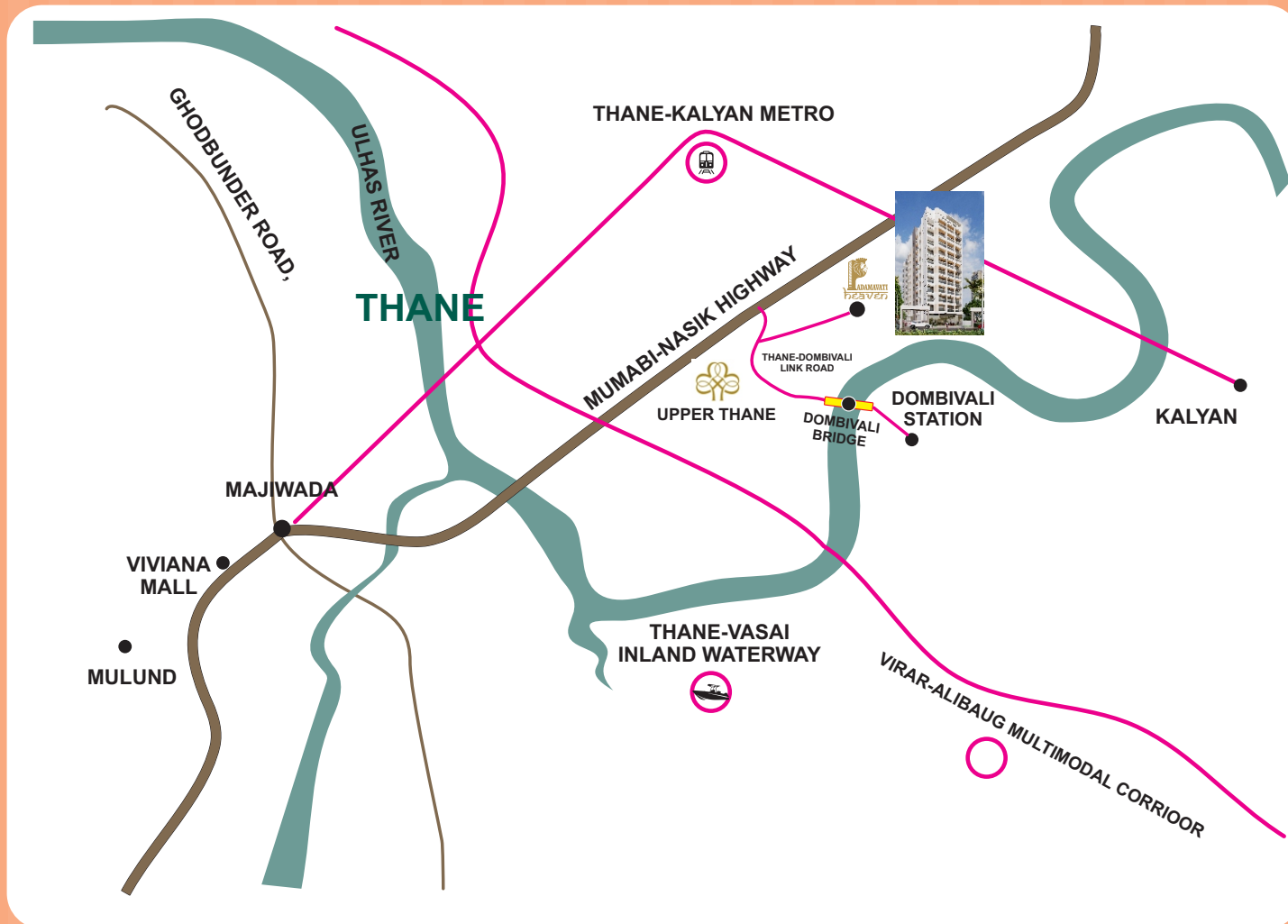


# LOCATION MAP



Project By

**Site Office**  
Padamavati heaven, survey no. 24/30, Thane Dombivali Link Road,  
near Lodha Premium Royale Villas Upper Thane,  
Mankoli, Bhiwandi, Maharashtra 421302

**7715959555 / 7304544445**

**Head Office Add**  
Padamavati Builders & Infra, 1306/1307, Dev Corpora, 13th Floor,  
Khopat Road, Near Eastern Express Highway, Thane West.

we are available at :  

 Web : [www.padamavati.com](http://www.padamavati.com)  [padamavatiheaven@gmail.com](mailto:padamavatiheaven@gmail.com)

 022-41237775 / 41234500  [officialpadamavati@gmail.com](mailto:officialpadamavati@gmail.com)

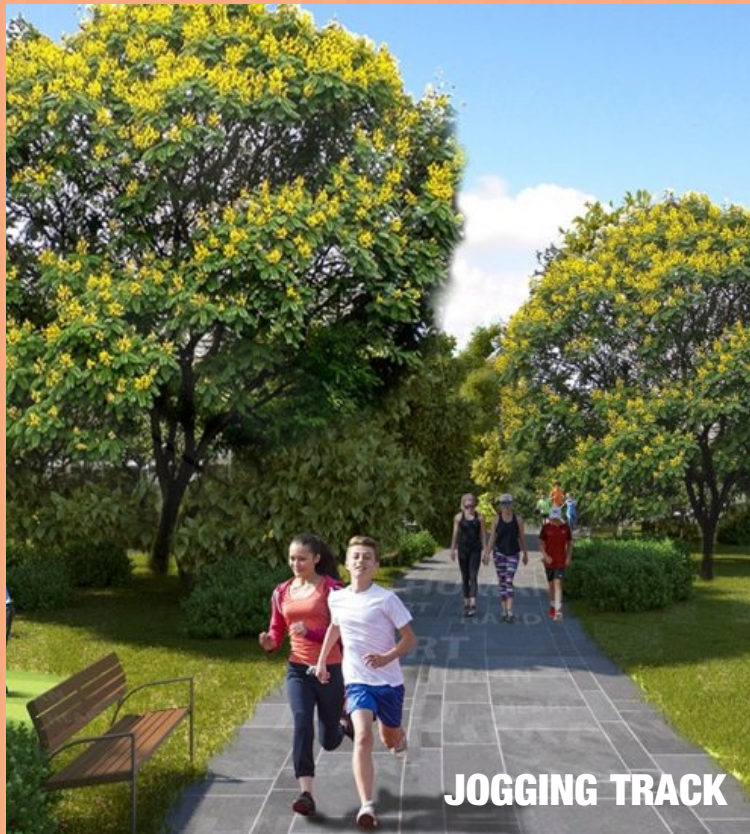
**Architect : Vertical Visionary Studio LLP Mr. Prasad Bhandarkar**

**DISCLAIMER:** This project is "New Project and is registered as 'Padamavati Heaven' under MahaRERA and is available on the website [www.maharera.maharashtra.gov.in/](http://www.maharera.maharashtra.gov.in/) under registered projects. Terms and Conditions apply. This brochure is a visual representation and does not constitute a legal document or offer/contract of any nature between the Promoter/Developer and the recipient. All visuals, images, plans, and maps are artistic conceptions for illustration purposes only, unless specified otherwise. Location maps and distances are approximate, not to scale, and for better understanding only. Colours, furniture, and fixtures shown are for aesthetic representation and not part of the flat offer for sale, conveying the Promoter/Developer's intent and purpose. Details mentioned are tentative, subject to approval, and may be modified/changed at the Promoter/Developer's sole discretion. The Promoter/Developer disclaims liability for accuracy, completeness, or usefulness of information disclosed. Government and other charges apply. For more details, call our representative or visit [www.padamavati.com](http://www.padamavati.com)



**REGISTERED IN MAHA RERA**  
**RERA No.**  
[www.maharera.maharashtra.gov.in](http://www.maharera.maharashtra.gov.in)





JOGGING TRACK



LIFE AT THE TOP

# Project

- ◆ Clear title Ownership plot
- ◆ G+11 Storey Residential Complex
- ◆ Ascetically designed 1-bhk & 2-bhk Flat with Master Bedroom
- ◆ Quality construction with earthquake resistance RCC structure
- ◆ Excellent planning with no wastage in all rooms
- ◆ Branded High Speed Elevators
- ◆ Advance & High Tech Fire Fighting System
- ◆ Power backup for Lifts and Common Area
- ◆ Loans available approved by major financial institutions & Bank



KIDS' PLAY AREA

# Specification



- FLOORING**
- 24"x24" Vitrified flooring in all rooms.
  - Designer flooring in all toilets & bathroom



- KITCHEN**
- Granite Kitchen platform with S.S.Sink
  - Designer glazed tiles
  - Provision for water purifier point



- DOORS**
- Decorative Laminated doors with wooden frame
  - P.V.C Doors in Bath and W.C



- WINDOWS**
- Powder Coated Aluminum Sliding Windows with tinted glass



- ELECTRIFICATION**
- Concealed Copper Wiring.
  - Adequate electrical Points in all rooms.
  - Modular Electrical Switches
  - Miniature Circuit Breakers (MCB)



- WALLS AND PAINTS**
- Putty finished internal walls
  - OBD paints for internal walls
  - Acrylic Paints for external walls



- BATH AND WC**
- 18"x 12" Designer glazed tiles
  - Anti skid designer flooring
  - Branded Sanitary
  - Premium Quality C.P. Fitting
  - Provision for Exhaust Fan & Geyser Point



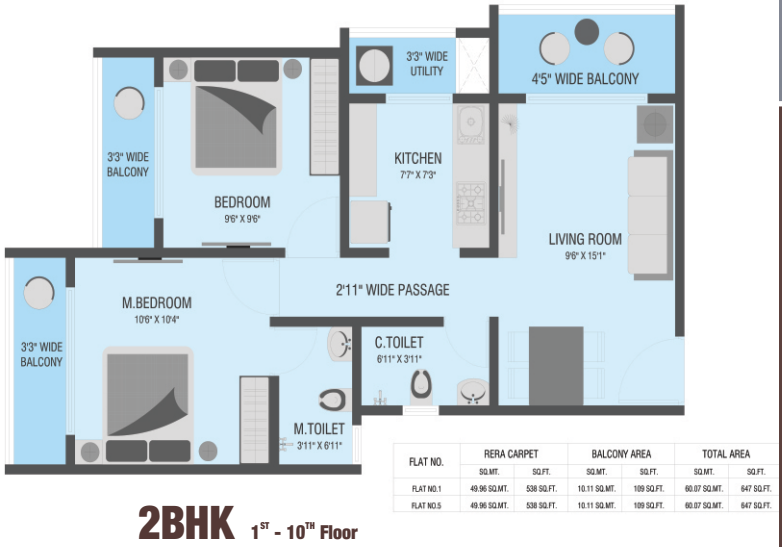
- WATER TANK**
- Underground & Overhead Water Tank with adequate Storage capacity
  - Rainwater harvesting system.



- TERRACE**
- Special water proofing treatment with china chips flooring on top floor
  - Solar system for hot water



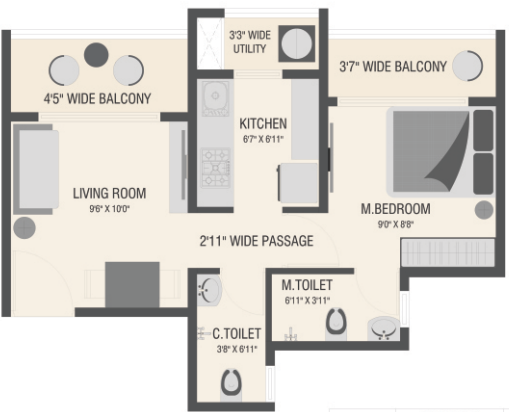
2BHK



2BHK 1<sup>ST</sup> - 10<sup>TH</sup> Floor

# Features

- ◆ Stilt parking (with drivers room)
- ◆ Children's play area
- ◆ Open parking
- ◆ Tree plantation
- ◆ Jogging track
- ◆ Open gym area



1BHK 1<sup>ST</sup> Floor - 10<sup>TH</sup> Floor

1BHK

